



CROCHET | SKILL LEVEL: **EASY**

ABBREVIATIONS

Approx =

Approximate(ly)

Ch = Chain(s)

Cont = Continue(ity)

Dc = Double crochet

Hdc = Half double
crochet

Rem = Remain(ing)

Rep = Repeat

RS = Right side

Sc = Single crochet

Sc2tog = Draw up a
loop in each of next
2 sc. Yoh and draw

through all loops on

hook

Sl st = Slip stitch

St(s) = Stitch(es)

Tog = Together

WS = Wrong side

Yoh = Yarn over hook

MEASUREMENTS

Approx 12" x 12" x 6" [30.5 x 30.5
x 15 cm].

GAUGE

13 sc and 15 rows = 4" [10 cm].

INSTRUCTIONS

Note: When working from chart and joining new color, work to last 2 loops on hook of last st. Draw new color through 2 loops, then proceed in new color.

BOTTOM AND SIDE PANELS

(make 3 alike)

Note: Work Chart (see page 2), noting each square of chart is equal to 1 sc and *reading RS rows from right to left and WS rows from left to right*. Carry color not in use across top of entire previous row and work sts around it. This will ensure even gauge as all sts will be worked around an extra strand of yarn held across top of previous row. Carry both colors up side of work.

With A, ch 25.

1st row: (RS). Following Chart according to note above, 1 sc in 2nd ch from hook. 1 sc in each ch to end of chain. Turn. 24 sc.

MATERIALS

Red Heart® Super Saver® (7 oz/198 g; 364 yds /333 m)

Contrast A Real Teal (656) **2 balls or 390 yds/356.5 m**

Contrast B Aruba Sea (505) **1 ball or 285 yds/260.5 m**

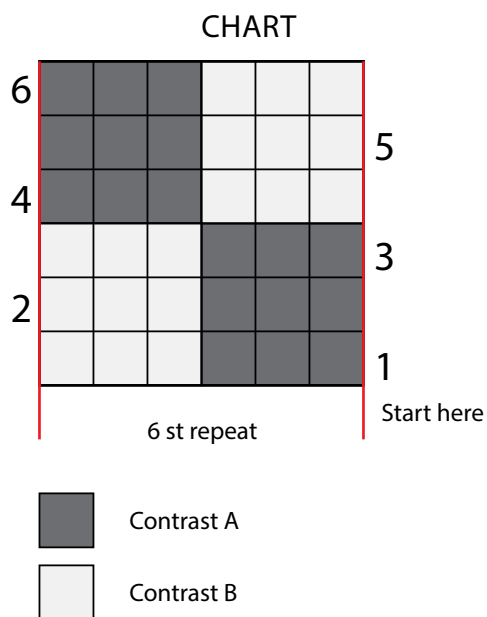
Contrast C Hot Red (390) **1 ball or 29 yds/26.5 m**

Contrast D Aran (313) **1 ball or 35 yds/32 m**

Size U.S. H/8 (5 mm) Susan Bates® Silvalume™ crochet hook **or size needed to obtain gauge.** Susan Bates® yarn needle.

2nd row: Ch 1. 1 sc in each sc to end of row. Turn.

Rep 2nd row and cont working Chart until work measures 12" [30.5 cm] ending with either 3rd or 6th row of Chart. Fasten off.



FRONT AND BACK PANELS

With A, ch 49.

1st row: (RS). Working in Chart as before, 1 sc in 2nd ch from hook. 1 sc in each ch to end of chain. Turn. 48 sc.

2nd row: Ch 1. 1 sc in each sc to end of row. Turn.

Rep 2nd row and cont working Chart until work measures 12" [30.5 cm] ending with either 3rd or 6th row of Chart. Fasten off.

Join Side, Front and Back Panels:

Arrange Panels to form a box, having Side Panels opposite each other.

With WS of 2 Panels tog, join A with sl st to top left corner. Ch 1. Working through both thicknesses, work sc evenly along side edge. Fasten off. Rep for rem Panels.

Join Bottom: With RS of Bottom facing, place lower edge of joined Panels behind Bottom with WS of work tog, aligning corner of Bottom with joining rows of Panels. Join A with sl st. Ch 1. Working through both thicknesses, work sc evenly around all 4 sides of Bottom. Join with sl st to first sc. Fasten off.

STRAPS (make 2)

With A, ch 73.

1st row: 1 sc in 2nd ch from hook. 1 sc in each ch to end of ch. Turn. 72 sc.

2nd row: Ch 1. 1 sc in each sc to end of row. Turn.

Rep 2nd row until Strap measures 2" [5 cm]. Fasten off.

Sew Straps to Front and Back of Bag as shown in photo.

MUSHROOM CAP

With C, ch 10. See diagram on page 3.

1st row: 1 sc in 2nd ch from hook. 1 sc in each ch to end of chain. Turn. 9 sc.

2nd row: Ch 1. 2 sc in first sc. 1 sc in each of next 3 sc. 2 sc in next sc. 1 sc in each of next 3 sc. 2 sc in last sc. Turn. 12 sc.

3rd to 5th rows: Ch 1. 1 sc in each sc to end of row. Turn.

6th row: Ch 1. 2 sc in first sc. 1 sc in each sc to last sc. 2 sc in last sc. Turn. 16 sc.

7th row: Ch 1. 1 sc in each sc to end of row. Turn.

8th row: Ch 1. 2 sc in first sc. 1 sc in each sc to last sc. 2 sc in last sc. Turn. 16 sc.

9th row: Ch 1. 1 sc in each sc to end of row. Turn.

10th row: Ch 1. 2 sc in first sc. 1 sc in each sc to last sc. 2 sc in last sc. Turn. 18 sc.

11th row: Ch 1. 1 sc in each sc to end of row. Turn.

12th row: Ch 1. 1 sc in each of first 2 sc. 1 hdc in each of next 4 sc. 1 dc in each of next 6 sc. 1 hdc in each of next 4 sc. 1 sc in each of last 2 sc.

Do not turn.

Cont working sc evenly around sides of and top of Mushroom Cap, ending at beg of last row. Fasten off.

MUSHROOM STEM

With D, ch 12. See diagram on page 3.

1st row: 1 sc in 2nd ch from hook. 1 sc in each ch to end of chain. Turn. 11 sc.

2nd row: Ch 1. 2 sc in first sc. 1 sc in each sc to last sc. 2 sc in last sc. Turn. 13 sc.

3rd row: Ch 1. 1 sc in each sc to end of row. Turn.

4th row: Ch 1. 2 sc in first sc. 1 sc in each sc to last sc. 2 sc in last sc. Turn. 15 sc.

5th row: Ch 1. 1 sc in each sc to end of row. Turn.

6th row: Ch 1. 2 sc in first sc. 1 sc in each sc to last sc. 2 sc in last sc. Turn. 17 sc.

7th to 12th rows: Ch 1. 1 sc in each sc to end of row. Turn.

13th row: Ch 1. Sc2tog. 1 sc in each sc to last 2 sc. Sc2tog. Turn. 15 sc.

14th row: Ch 1. 1 sc in each sc to end of row. Turn.

15th row: Ch 1. Sc2tog. 1 sc in each sc to last 2 sc. Sc2tog. Turn. 13 sc.

16th row: Ch 1. 1 sc in each sc to end of row. Turn.

17th row: Ch 1. Sc2tog. 1 sc in each sc to last 2 sc. Sc2tog. Turn. 11 sc.

18th row: Ch 1. 1 sc in each sc to end of row. Turn.

19th to 22nd rows: Ch 1. 1 sc in each sc to end of row. Turn. Fasten off.

Small Mushroom Spot (make 2)

With D, ch 2.

1st rnd: 6 sc in 2nd ch from hook. Join with sl st to first sc. Fasten off.

Large Mushroom Spot

With D, ch 3.

1st rnd: 10 hdc in 3rd ch from hook. Join with sl st to first hdc. Fasten off.

Sew Spots to Mushroom Cap as shown in photo.

Sew Mushroom Stem to Front as shown in photo.

Sew Mushroom Cap to Front as shown in photo, noting that it overlaps with last 2 rows of Mushroom Stem.

